

Photo: iStock

Backing Jobs for the Sunshine Coast and Moreton Bay



Skilling Queenslanders for Work

\$48.7 million allocated to provide training to 7,198 people, including 4,132 people who have now been employed.

(July 2015 to May 2019)



Advance Queensland

\$19.4 million of grants awarded to 609 applicants to drive innovation, build on our natural advantages, and help raise the Sunshine Coast and Moreton Bay's profile as an attractive investment destination.

(July 2015 to March 2019)



Back to Work

\$13.4 million of payments have been paid to 805 employers to employ 1,188 eligible unemployed jobseekers.

(July 2017 to May 2019)



Apprentice and Trainee Payroll Tax Rebate

\$5.2 million of rebates claimed by 632 businesses to reinvest into their business and support employment.

(July 2015 to April 2019)

Restoring frontline services on Sunshine Coast and Moreton Bay

Growth from March 2015 to March 2019



1,170
extra
nurses
up
40.3%



360
extra
doctors
up
38.7%



909
extra
teachers
up
13.4%



268 extra
teacher
aides
up
19.7%

budget.qld.gov.au

The Queensland Budget will directly support the Sunshine Coast and Moreton Bay with significant expenditure in 2019-20 including:

Infrastructure

\$1.5B

for productivity enhancing infrastructure and capital works, estimated to support around

4,700

jobs in this region in 2019-20.

Health

\$4.9B

for Sunshine Coast, Metro North and West Moreton Hospital and Health Services.

Education

\$218.3M

to maintain, improve and upgrade schools on the Sunshine Coast and Moreton Bay.

1,000

estimated businesses on the Sunshine Coast and Moreton Bay will benefit from an increase to the payroll tax free threshold as part of the

\$885 million Payroll Tax Package

The Sunshine Coast and Moreton Bay will also benefit from:

Caboolture Hospital

\$419.1M

to deliver the critical infrastructure needed to meet the increase in current and future demand for hospitals and healthcare services in this growing region.

New Schools

\$270.4M

for five new schools on the Sunshine Coast and Moreton Bay.

Bruce Highway Upgrade Program

\$6.5B

for upgrades to the Bruce highway, including widening to six lanes between Caloundra Road and Sunshine Motorway, in partnership with the Australian Government.



**Queensland
Government**

Sunshine Coast and Moreton Bay

1 Lake Macdonald Dam: safety upgrade
\$8.4 million in 2019-20 out of a \$19.8 million total spend to continue planning works (stage 2) for enhancements to meet future extreme weather events.

2 Sunshine Beach State High School
\$5.2 million in 2019-20 out of a \$7.5 million total spend to construct a new building with 13 general learning spaces and an extension to the music block for two specialist learning spaces.

3 Eumundi State School
\$1.5 million in 2019-20 out of a \$7 million total spend to construct a new building with eight general learning spaces.

4 Coolool replacement police facility
\$1.6 million in 2019-20 out of a \$2.7 million total spend to replace the facility.

5 Nambour General Hospital
\$10.2 million in 2019-20 out of a \$86.2 million total spend to meet the functional requirements of the hospital in its new role as a sub-acute facility. The facility will be reconfigured, refurbished and reorganised to ensure it is fit for purpose. Part of the Advancing Queensland Health Infrastructure Program.

6 Conondale National Park - Kenilworth Base upgrade
\$276,891 in 2019-20 out of a \$553,348 total spend to deliver Kenilworth Base upgrades.

7 Jimna fire tower
\$1.3 million in 2019-20 out of a \$1.5 million total spend to restore the tower listed on the Queensland Heritage Register.

8 Suncoast power project
\$47.4 million in 2019-20 out of a \$106.7 million total spend to continue work on the multi-stage Suncoast sub-transmission powerline project to increase network capacity and improve reliability.

11 New schools in Palmview
\$38.5 million in 2019-20 out of a \$130.9 million total spend to construct a new primary and a new special school and to commence early works for a new high school. Part of the Building Future Schools Fund.

13 Sunshine Coast University Hospital Group 4 information and communication technology project
\$4.8 million in 2019-20 out of a \$66.3 million total spend to expand existing IT services as well as to develop new IT services to support the Sunshine Coast University Hospital.

14 Maleny replacement Queensland Fire and Emergency Services complex
\$500,000 in 2019-20 out of a \$3 million total spend to replace the facility.

15 Beerburrum to Nambour
\$50 million in 2019-20 out of a \$550.8 million total spend to upgrade sections of the North Coast Line (Beerburrum to Nambour train stations). Delivered in partnership with the Australian Government.

16 Ewen Maddock Dam: safety upgrade stage 2
\$8.2 million in 2019-20 out of a \$23.5 million total spend to commence the stage 2 enhancements to meet future extreme weather events.

17 New secondary school in Caloundra South
\$24 million in 2019-20 out of an \$83.1 million total spend to meet the growing needs of the region. Part of the Building Future Schools Fund.

18 Glasshouse National Park - infrastructure revitalisation
\$1.2 million in 2019-20 out of a \$3.4 million total spend to upgrade and replace visitor and recreation facilities in Glasshouse Mountains.

19 Kilcoy substation upgrade
\$8 million in 2019-20 out of a \$10.8 million total spend to carry out transformer replacement and upgrade works to improve network performance.

20 Caboolture Hospital
\$21.5 million in 2019-20 out of a \$419.1 million total spend to deliver the \$352.9 million Caboolture Hospital expansion, which provides an additional 130 beds to better service the region under the Building Better Hospitals package, and to expand the emergency department, and build a new carpark.

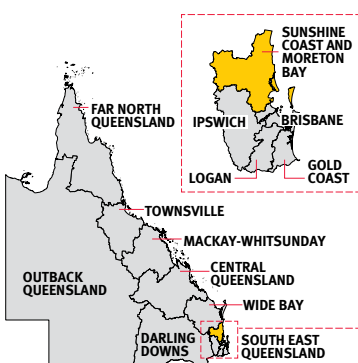


9 Sunshine Coast aquatic exercise facility
\$574,356 in 2019-20 out of a \$1.4 million total spend to construct the facility within the existing University of the Sunshine Coast Sports Precinct. Part of the Get Playing Plus Program.

12 Bruce Highway, Caloundra Road to Sunshine Motorway
\$186 million in 2019-20 out of a \$812.9 million total spend to widen the highway from four to six lanes. Part of the Bruce Highway Upgrade Program, delivered in partnership with the Australian Government.

10 University of the Sunshine Coast Stadium
\$2 million in 2019-20 out of a \$8.1 million total spend to redevelop the stadium and Sunshine Coast Lightning Headquarters.

Please note: Not all Government expenditure for the region is shown. Dollar amounts may include capital and operating expenditure, though may not represent the entire funding allocated.



Caboolture Hospital expansion

The \$352.9 million expansion of the Caboolture Hospital, an integral part of the Palaszczuk Government's Building Better Hospitals program, will help address increasing demand by enhancing public hospital capacity and services in one of the fastest growing regions in South East Queensland.

Once completed, the redevelopment will feature new and expanded accommodation including an additional 16 spaces for the patient transit hub, 27 treatment spaces in the emergency department, 130 acute and sub-acute beds (overnight and same day beds), two operating theatres, four stage 1 recovery spaces, and an expansion of clinical support and facility support services.

Additionally, a new \$46.6 million, 945 space multi-storey carpark at the Caboolture Hospital will be constructed to improve car parking access for patients, carers, and their families. At completion of the redevelopment and carpark projects, the site will have approximately 1,640 car park spaces.



Photo/Getty

Bruce Highway upgrade

The Palaszczuk Government continues to work with the Australian Government to deliver a jointly funded Bruce Highway Upgrade Program aimed at improving safety, flood resilience and capacity along its 1,700-kilometre length.

In 2019-20, the Government is progressing the \$812.9 million Bruce Highway Upgrade – Caloundra Road to Sunshine Motorway project, which is vital for the continued development of the Sunshine Coast region.

The project will widen the Bruce Highway to six lanes from Caloundra to the Sunshine Motorway and include the construction of Australia's first diverging diamond interchange at Caloundra Road. The project will also deliver a two-way service road for local traffic on the western side of the highway between Steve Irwin Way and Tanawha Tourist Drive.

A key benefit of the upgrade is separating long-distance traffic from local traffic movements, allowing the highway to function as a high-speed, high-volume corridor.

To improve road safety, the project includes \$79.8 million in joint funding for installing roadside safety barriers at designated locations along the Bruce Highway on the Sunshine Coast, with the Queensland Government providing \$16 million and the Australian Government providing \$63.8 million.

21 **Bribie Island State High School**

\$2.4 million in 2019-20 out of a \$7.6 million total spend to construct a new building with 10 learning areas and four specialist areas.

22 **North Brisbane Youth Step Up Step Down Facility**

\$4.1 million in 2019-20 out of a \$8.5 million total spend to construct a 6 bed sub-acute adolescent mental health facility to provide mental health support within a community setting in Caboolture. Part of the South East Queensland - Adolescent Mental Health Facilities.

23 **New special school in Caboolture**

\$13.7 million in 2019-20 out of a \$21.2 million total spend to construct stage 1. Part of the Building Future Schools Fund.

24 **Caboolture replacement police facility and district headquarters**

\$144,000 in 2019-20 out of a \$17.3 million total spend to replace the facility and headquarters.

25 **District domestic and family violence coordinators**

\$116,000 in 2019-20 and ongoing for one additional coordinator to provide direction, guidance, and training on issues associated with domestic and family violence.

26 **Caboolture refurbishment of old police facility**

\$1.3 million in 2019-20 out of a \$13.8 million total spend to refurbish the old facility.

27 **Morayfield train station**

\$6 million in 2019-20 out of a \$21.7 million total spend to continue the upgrade to provide improved access and facilities.

28 **Burpengary State Secondary College**

\$2.8 million in 2019-20 out of a \$10 million total spend to construct a new building with 12 general learning spaces and four specialist learning spaces.

KEY

- Community wellbeing
- Utilities
- Health
- Education
- Transport and roads
- Justice and safety
- Government services
- Recreation and culture
- Statewide/region-wide
- Election commitment

29 **Redcliffe Hospital**

\$48.4 million in 2019-20 out of a \$90.9 million total spend to build a carpark, fund a variety of refurbishments and improvements, and for a new MRI machine and a second CT scanner.

30 **Dakabin train station**

\$15.2 million in 2019-20 out of a \$41.9 million total spend to upgrade Dakabin train station to provide improved access and facilities.

31 **Kallangur community centre**

\$1.3 million in 2019-20 out of a \$4.1 million total spend for design and construction.

32 **Griffin State School**

\$8.6 million in 2019-20 out of a \$19.3 million total spend to construct three new buildings (with four, 12 and 14 learning areas respectively).

33 **Lawnton State School**

\$597,000 in 2019-20 out of a \$2.4 million total spend to contribute to the construction of a new hall.

34 **Social housing**

\$87.2 million in 2019-20 to expand and improve social housing in the Sunshine Coast and Moreton Bay region.

To see more Palaszczuk Government initiatives for Sunshine Coast and Moreton Bay visit budget.qld.gov.au

Jobs supported by infrastructure

40,500

Total infrastructure program over four years

\$49.5B

Total spend on road and transport in 2019-20

\$5.6B

Youth Justice Investment over five years

\$332.5M

Education and training in 2019-20

\$14.9B

Health in 2019-20

\$18.5B

Additional justice system investment over five years

\$847.9M

Lowering cost of living

\$5.7B

Payroll Tax Package

\$885 million of targeted payroll tax initiatives to support business and create employment, including:

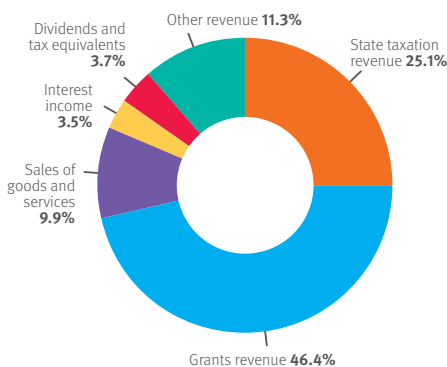
- + an increase to the payroll tax free threshold for small business from \$1.1 million to \$1.3 million
- + a discount of 1 percentage point on the relevant payroll tax rate for employers with more than 85% of their employees residing outside SEQ
- + a rebate for taking on additional full-time employees of up to \$20,000
- + an extension of the 50% payroll tax rebate for businesses that employ apprentices and trainees.

Backing Queensland Jobs

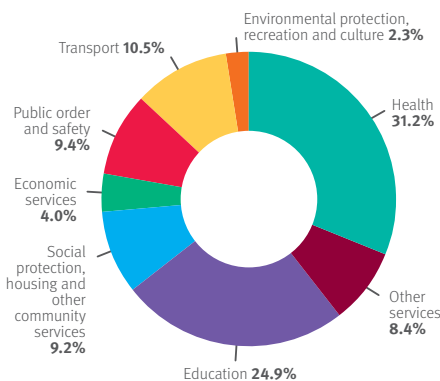
Queensland's diversified economy provides a unique business environment that places the State ahead of the pack. The Palaszczuk Government continues to work with and support businesses to create employment opportunities and community prosperity.

- + \$12.9 billion capital works program to directly support 40,500 jobs across Queensland in 2019-20.
- + \$250 million to CleanCo for new renewable energy generation, creating more jobs on top of the 4000 Queensland jobs in the solar, wind and hydro sectors.
- + \$2.7 billion to support safe, secure, reliable and cost-effective energy and water, and to enhance the productive capacity of businesses, industries and communities.
- + \$420 million towards Skilling Queenslanders for Work, to help eligible Queenslanders get the skills, qualifications and direct assistance they need to enter and stay in the workforce.
- + \$2.4 billion police operating budget as well as \$69.8 million capital for new, upgraded and replacement police facilities, including \$28 million to continue work on the \$52.2 million Counter-Terrorism and Community Safety Training Centre at Wacol.
- + \$22 million towards Beef Recovery Package, to tackle devastation from the North and Far North Queensland monsoon trough. The Queensland Rural and Industry Development Authority will administer Australian Government funding of \$300 million over three years to assist primary producers and their stock get back on their feet.
- + \$1.2 billion education portfolio capital program, including new schools, education facilities, and refurbishments.
- + \$777.7 million for health infrastructure to support service delivery.
- + \$479.3 million for new social housing and upgrades.
- + From joint commitments totalling \$39 million for business and industry, the Queensland and Australian governments will provide a \$22 million Beef Recovery Package, to tackle devastation from the North and Far North Queensland monsoon trough. The Queensland Rural and Industry Development Authority will administer Australian Government funding of \$300 million over three years to assist primary producers and their stock get back on their feet.
- + \$254 million in joint funding with the Australian Government for additional natural disaster recovery packages.

2019-20 Revenue



2019-20 Expenses



Economic Growth

